

VISITING THE WELLINGTON SPECIALIST COURT CENTRE, WELLINGTON DISTRICT COURT BUILDING

Information for the Specialist Court Centre, Wellington

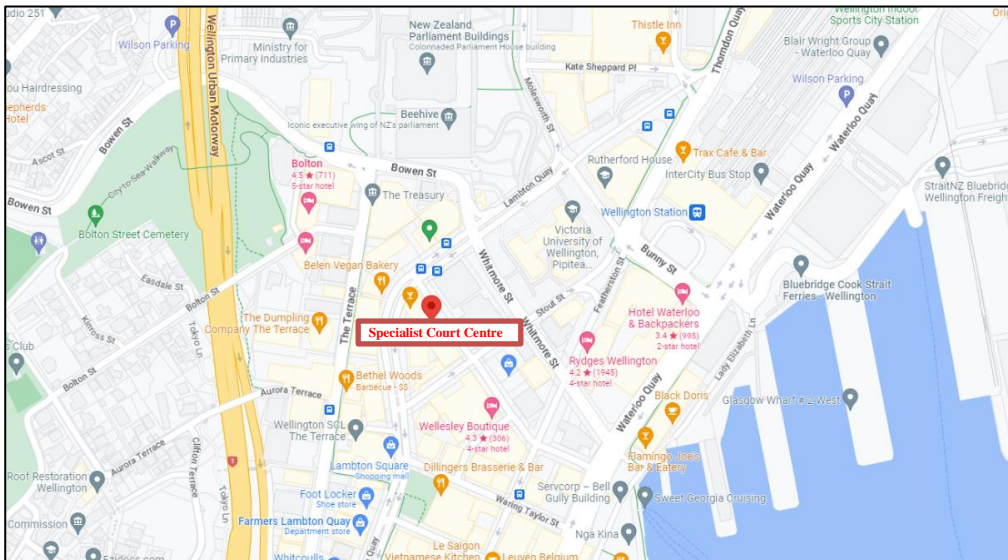
Nau mai haere mai and welcome to the Specialist Court Centre in the Wellington District Court Building. Here are some things you will find useful for your visit.

Location

Specialist Court Centre, Wellington District Court Building, Level 5, 49 Ballance Street, Wellington CBD.

Level 5

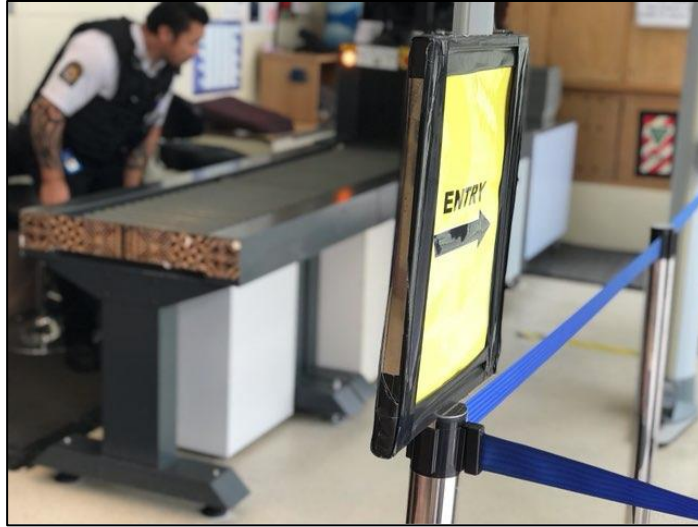
- Employment Court, Te Kōti Take Mahi o Aotearoa
- Environment Court, Te Kōti Taiao o Aotearoa
- Coroners Court, Te Kōti Kaitirotiro Matewhawhati



When you arrive

Security

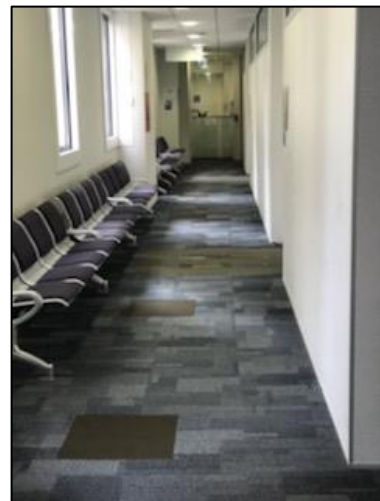
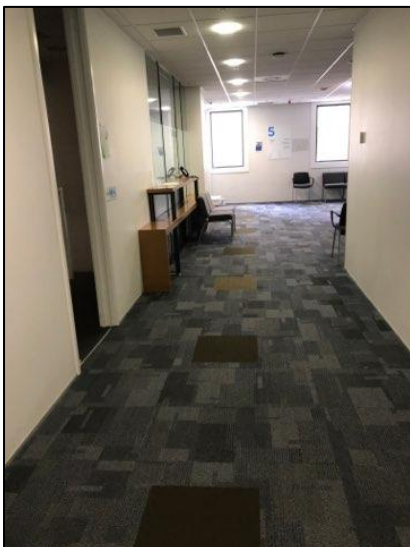
Court Security Officers (CSOs) are located in the main lobby next to the lift – please follow the instructions of the CSOs on arrival.



Access

Courtrooms 5.01 and 5.02, and hearing rooms 5.03 and 5.04 are all on Level 5, which is accessed by lift.

Lift access opens at 9 am.



Public Transport

Trains and buses

The Wellington Railway Station is less than 5-minutes walk (600 metres) from the Wellington District Court Building. There are a number of bus links in the area and a major bus stop on Lambton Quay outside the Supreme Court building.

Please check the latest information, including about timetables, on the Metlink App or MyMetlink's website or app.

Car parking

There are various paid parking options near the Wellington District Court Building.

| Carpark | Distance from Wellington District Court Building | Opening hours | Casual rate (as at March 2023) | Early bird rate (as at March 2023) |
|---|---|----------------------|---------------------------------------|---|
| Prime Parking 9-13 Stout Street Wellington CBD | 3 mins walk or 2.10 metres | 6am-6pm | From 6am: \$4.00 (per 30 mins) | Entry between 6-10 am (exit by 7pm): \$26.00 |
| NTT Tower 25 Waring Taylor St Wellington CBD | 6 mins walk | 6am-7pm | From 6am: \$6.00 (first 30 mins) | Entry between 6-10am (exit by 7pm): \$35.00 |

Parking fees are subject to change – please check rates directly with provider prior to using any of these car parks.

Street parking

Limited paid street parking is available on streets in the immediate vicinity. Time limits apply to all street parking.

Drop-offs and pick-ups

The address for drop-offs and pick-ups is 49 Ballance Street, opposite the Supreme Court.

There is a taxi stand outside the Supreme Court where taxis might wait.

Refreshment options

There are a number of cafes and takeaway options around the Wellington District Court Building, including:

Corner Stout and Bunny Streets: Gales

Corner of Waring Taylor and Maginnity Streets: Mr Bun

Lambton Quay: Where's Charlie, Mama's Kitchen, Café Priva, Sakura Sushi, Seize, Wishbone

Lambton Square (opposite the top of Stout Street): Lambton Square Food Court